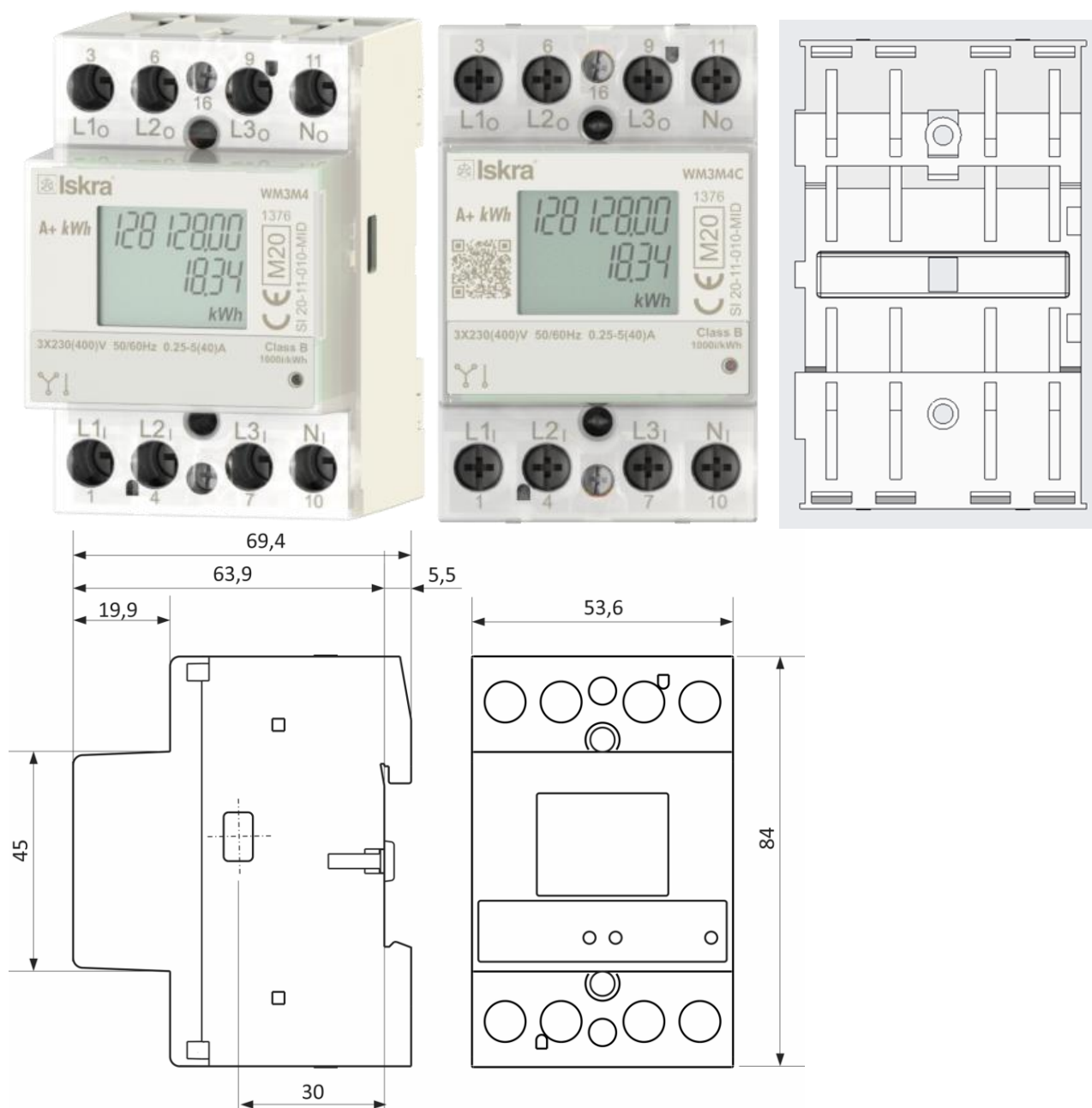


<b>PCN#:</b>	2024-002		<b>PRODUCT/PROCESS CHANGE NOTIFICATION</b>			
<b>MCN#</b>	S2024-001, S2024-012					
<b>Date:</b>	23.8.2024	<b>Manufacturing location influenced:</b>	BU Kranj			
<b>Contact:</b>	Gašper Albinini, sales manager, <a href="mailto:gasper.albinini@iskra.eu">gasper.albinini@iskra.eu</a>			<b>Attachments:</b>	yes	
<b>PRODUCTS INFLUENCED:</b> WM3M4, WM3M4C						
New ordering codes available at sales department.						
<b>DESCRIPTION, PURPOSE AND INFLUENCE OF CHANGE</b>						
<i>Housing Correction</i>						
<b>Bottom part:</b> The correction is proposed due to transition to an automated assembly – the insertion of springs and the need for a new tool. Effect on basic product functionality: <b>No impact.</b>						
<b>Middle part:</b> On the middle part of housing walls had to be adjusted to be compatible with the new bottom part of housing. To prevent possible deformations during riveting, mounting area for top part of housing was added to ensure precise and improved position. Effect on basic product functionality: <b>No impact.</b>						
<b>Top part:</b> Made with new technology. Due to change of technologies, the need for stickers and the process of screen printing will be eliminated. Effect on basic product functionality: <b>No impact.</b>						
 <b>FW Correction</b> - New /improved functions refer to eliminate anomalies in communication parameters, signing read data and supporting additional functions that make the production process easier. Changes <b>do not affect</b> the measuring part and operation of energy meters						
For more detailed description of changes look into User Manual WM3M4_C						
<b>APPLIED CHANGES / MODIFICATIONS REGARDING:</b>			<b>CURRENT VERSION</b>	<b>NEW VERSION</b>	<b>DATE EFFECTIVE</b>	<b>ADDITIONAL COMMENT</b>
<b>Firmware:</b>	✓	New / improved functions	2.05	<b>2.12</b>	1.10.2024	No effect on measuring part and operation of energy meter.
<b>Software:</b>						
<b>Hardware:</b>						
<b>Mechanical:</b>	✓	Housing design	/	/	1.10.2024	Effect on basic product functionality: No impact.
<b>Material:</b>						
<b>Technology:</b>	✓	Housing: Top Part	/	/	1.10.2024	Effect on basic product functionality: No impact.
<b>Documentation:</b> (specify)						
<b>Other:</b> (specify)						

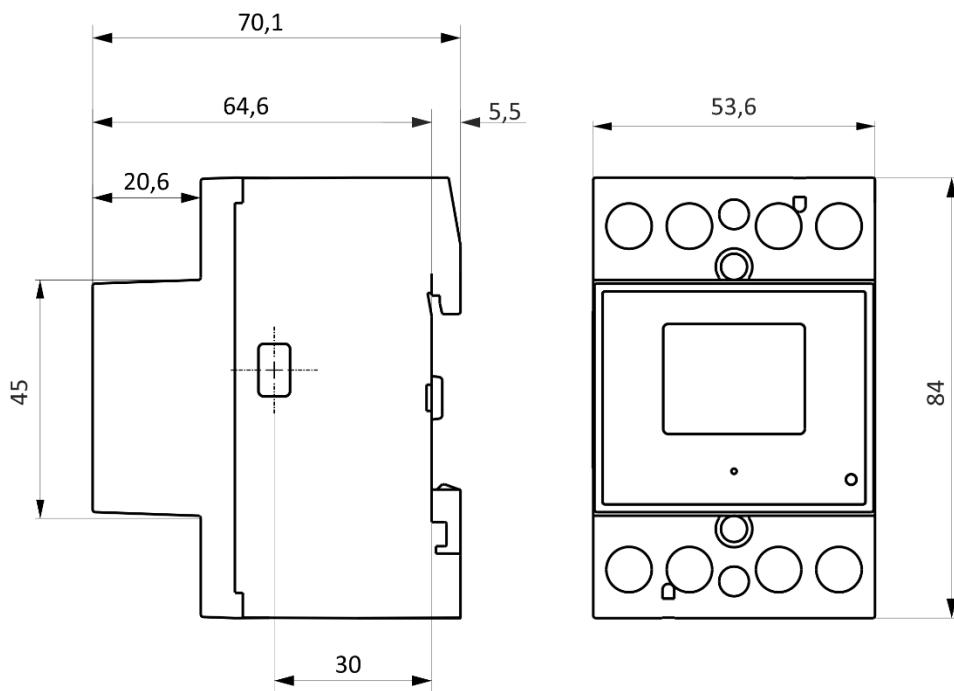
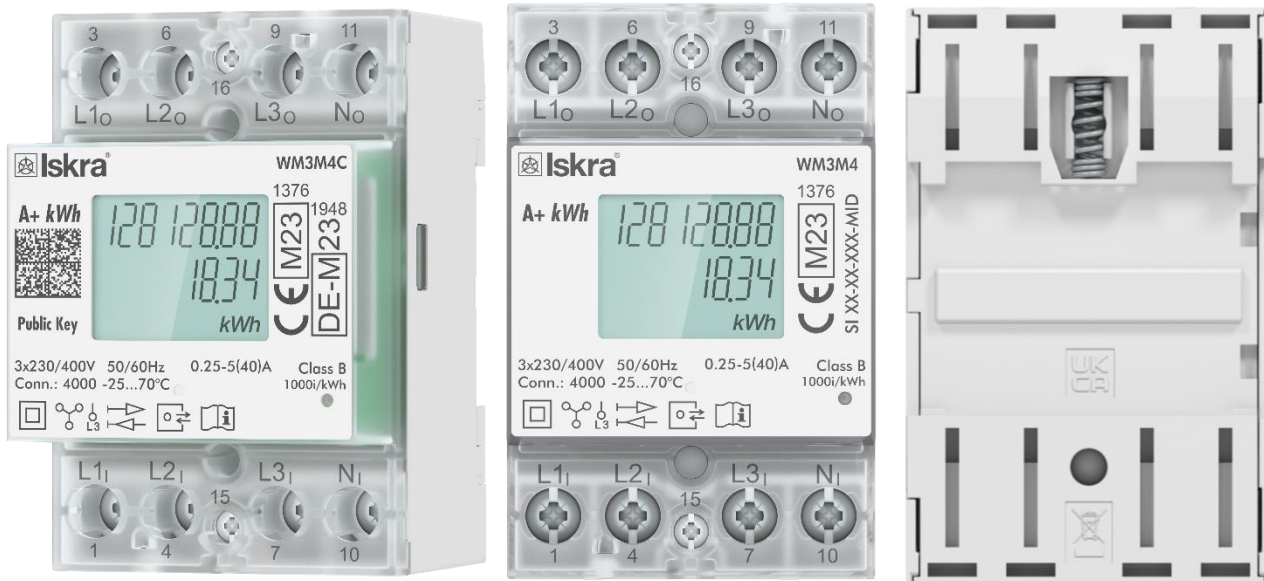
<b>QUALITY/RELIABILITY/TESTING:</b> See attachments	
<b>QUALIFICATION PLAN (CERTIFICATION PLAN):</b> revision C MID certificate SI 20-11-010 MID WM3M4, WM3M4C	
<b>PROPOSED FIRST SHIP DATE AFTER CHANGE:</b>	<b>Q4 2024</b>
<b>UNCHANGED PRODUCT AVAILABILITY DATE:</b>	<b>Q1 2025</b>

## Attachment 1:

Old design:



New design:



## Attachment 2:

### Firmware Upgrades:

(2.06, 2.07, 2.08, 2.09, 2.10, 2.11 versions were used for testing purposes and were not released, version 2.09 was revised)

#### Changes from 2.05 to 2.12:

- Added support for alternative EEPROMs
- Added new function / command "i" in MODBUS registry 47051, which allows the regeneration of the output dataset with information about the last device charging.
- Reduced communication response time during periodic calculation of CRC32
- Correction when changing communication parameters (parity, stop bit) RS485 communication, signing. It was previously necessary to reset the product (turning the device on/off) when some communication parameters were changed.
- Added Cable Loss Calculations (MODBUS reg. 46979 - 46999)
- Added "Consumption 2 (A-) + Cable Loss 2 (A-)" option on the LCD (MODBUS reg. 47062 bit-14)
- Added "Consumption (A+) - Cable Loss (A+)" option on the LCD (MODBUS reg. 47062 bit-13)
- Added "Cable Loss 2 (A-)" option on the LCD (MODBUS reg. 47062 bit-12)
- Added "Cable Loss (A+)" option on the LCD (MODBUS reg. 47062 bit-11)
- Added "Cable Resistance (mOhm)" option on the LCD (MODBUS reg. 47062 bit-10)
- Added setting for Output Message Config (MODBUS reg. 47078)
- Added setting for Cable Loss Energy Config (MODBUS reg. 47079)
- Added setting for Cable Resistance (MODBUS reg. 47080)
- Added calculated neutral current Inc (MODBUS reg. 30132 - 30133)
- Added Squared Current (AAh) option in the Energy Counter X Parameter (MODBUS reg. 40421,40431,40441,40451 value 32)
- Added setting for Energy counters resolution (MODBUS reg. 47099)
- Added setting for Output Message Options (MODBUS reg. 47077)
- Added counter 2 start, stop and consumption registers (MODBUS reg. 47043 - 47048)
- Added "Consumption 2 (A-)" option on the LCD (MODBUS reg. 47062 bit-9)
- Changed consumption calculation on the LCD using 0.01kWh resolution
- Added MODBUS function 16 (write to one or more holding register) for MODBUS reg. 47051 to 47099
- Added "LR" and "LU" fields support in the scanning of the input dataset
- Added Change Lock control (MODBUS reg. 47097)
- Added error flag "E" if Change Lock control is not set (MODBUS reg. 47097 = 0)
- Removed option 3 from MODBUS reg. 47079
- Added "\*255" to OBIS code in "RI" field, if "RV" includes cable losses
- Added MODBUS reg. 47096
- Added power supply checking at power up
- locked MODBUS reg. 47062, 47076, 47077 and 47078 using Change Lock control (MODBUS reg. 47097)

### Attachment 3:

- Old sealing plan:

Type: WM3M4  
3-phase energy meter  
RS485 Communication  
SN: Wnnnnnnn yyyy/ww

RS485 Modbus RTU A 16 B 15

CE M21 1376  
SI 20-11-010 MID

Iskra d.o.o., Stegne 21, SI-1000 Ljubljana



Type: WM3M4C  
3-phase energy meter  
RS485 Communication  
SN: Wnnnnnnn yyyy/ww

RS485 Modbus RTU A 16 B 15

-25...70°C

CE M20 1376  
SI 20-11-010 MID

Iskra d.o.o., Stegne 21, SI-1000 Ljubljana

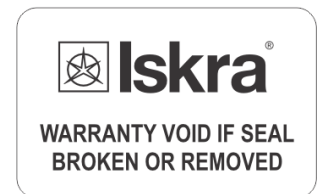
- New sealing plan:

Iskra d.o.o.  
Stegne 21  
SI-1000 Ljubljana  
3-phase energy meter  
Type: WM3M4  
RS485 Modbus RTU  
SN: Wnnnnnnn yyyy/ww

CE M22 1376  
SI 20-11-010-MID

UK CA

RS485 Modbus RTU A 16 B 15



Iskra d.o.o.  
Stegne 21  
SI-1000 Ljubljana  
3-phase energy meter  
Type: WM3M4C  
RS485 Modbus RTU  
SN: Wnnnnnnn yyyy/ww

CE M22 1376  
SI 20-11-010-MID

UK CA

Public Key

DE-M 22 1948  
DE MTP 20 B 011 M

RS485 Modbus RTU A 16 B 15

<b>CUSTOMER ACKNOWLEDGEMENT OF RECEIPT</b>		<b>PCN#</b>	
<i>Customer:</i>			
<i>Authorised Signee:</i>		<i>Title:</i>	
<i>e-mail Address:</i>		<i>Phone/Fax:</i>	
<i>Date:</i>		<i>Approval for shipments before effective date:</i>	
<i>Additional info:</i>			
<p>Customers should acknowledge receipt of the PCN within 30 days of delivery of the PCN. Any concerns, sample order response, or a request for further information should be provided within the acknowledgement period. If additional time is required to determine if samples or additional data is required, the customer must submit this request along with the acknowledgement response and state when they expect to complete their review. Lack of response by the customer after these 30 days constitutes acceptance of the change.</p>			